



Comfort Cabin

House-type Mobile home

House-type Kitchen/Bath/Toilet	NOSTALGIA ¥10,800,000~	JOURNEY ¥8,800,000~	ROYAL ¥8,900,000~	CLUB ¥7,100,000~	PREMIUM ¥7,300,000~	QUEEN ¥8,400,000~	LAND BRIDGE ¥7,200,000~	B-B PALACE ¥7,900,000~	V-TRAVEL ¥5,000,000~	COMFORT CABIN ¥5,200,000~	Custom order
--	----------------------------------	-------------------------------	-----------------------------	----------------------------	-------------------------------	-----------------------------	-----------------------------------	----------------------------------	--------------------------------	-------------------------------------	--------------



Comfort Cabin

This is a studio-type small model which has a bathroom and a kitchen.

This model was designed for a long-stay for a small number of persons. It is satisfying Japanese standard of fire prevention, ventilation, air intake, lighting and so on.

The body containing heat insulating material for cold districts and double glazing windows provide the comfortable room and energy-saving effect.

This is a compact model of 2.4m in width, balancing usability with mobility.

Last Updated: July 1, 2017

- ▶ [Exterior features](#)
- ▶ [Interior features](#)
- ▶ [Options](#)
- ▶ [Equipment colors](#)
- ▶ [Floor plan](#)
- ▶ [Equipment and specifications](#)



Exterior features

 Vinyl siding	 Wood deck porch	 Porch light	 Outdoor waterproofing outlet
---	--	---	---

Interior features

 Compact and simple indoor space	 It becomes a comfortable room when furniture is put in. (Furniture set option)	 Kitchen with a range hood fan and cabinets	 2-burner gas cooktop with a fish grill
 Unit bathroom with a shower, bathtub, toilet and sink	 Entrance door with a mail box	 Loft space	 Double-pane windows
 Energy-saving LED ceiling light	 40 amp breaker (made in Japan)	 Air inlet	 Ventilating fan

Options

Options for House-type models



Furniture set (D): [double curtains (blackout&sheer, wooden rail)/ a single bed/ a coffee table/ a refrigerator (90L)]

Floor heating

Air-conditioner

Exterior colors

- Vintage Cream
- White
- Sand
- Pebble Clay
- Estate Gray
- Red Wood
- Shamrock
- Heritage Blue
- Natural Cedar

Vinyl siding



Option: Two-tone color
+80,000 yen (tax-excluded)

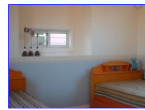
Interior colors

Standard

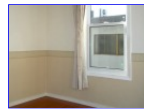
Option: Two-tone cloth +90,000 yen (tax-excluded)



White cloth



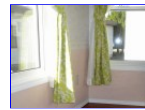
Casual Blue



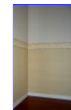
Classic Beige



Noble Green

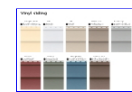


Elegance Pink



Fresh Yellow

Equipment colors



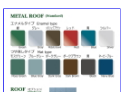
Exterior wall



Floor: Vinyl flooring (C.F. sheet)
Option: Wooden flooring



Door



Roof



Optional exterior wall
(Fiber cement siding)



Option interior wall

Floor plan

2.4m-wide model. Length is available from 5m to 10m (by one meter).

CC824 (length 8 meters)




CC824: elevation view



"Comfort Cabin" Equipment and specifications [House-type, 2.4m-width model]

Standard: Std / Option: Opt

 Options for House-type models

Model	Comfort Cabin		
Model number	CC624	CC824	CC1024
Price (tax-excluded) / Unit: JPY	5,300,000	5,500,000	5,800,000
Price (tax-included) / Unit: JPY	5,724,000	5,940,000	6,264,000
Equipment Length	6m	8m	10m
EXTERIOR			
[Roof] Galvalume roof	Std	Std	Std
[Outer Wall] Vinyl siding (standard 9 colors)	Std	Std	Std
Aluminum sash double-pane windows	Std	Std	Std
Wood deck entrance porch with a column	Std	Std	Std
Entrance door with a mail box	Std	Std	Std
Porch lights	Std	Std	Std
Outdoor waterproofing outlet	Std	Std	Std
INTERIOR & EQUIPMENT			
[Interior Wall] Cloth finish (white)	Std	Std	Std
[Floor] Vinyl flooring (C.F.sheet) (standard 6 colors)	Std	Std	Std
Kitchen (a range hood fan, an overhead cabinet included): 1-basin sink, 2-burner gas cooktop with a fish grill	Std	Std	Std
Unit bathroom (shower, bathtub, toilet, bathroom sink)	Std	Std	Std
Loft	Std	Std	Std
LED ceiling lights	Std	Std	Std
Wall outlets	Std	Std	Std
Air-conditioner outlet	Std	Std	Std
40 amp breaker (made in Japan)	Std	Std	Std
Air inlet	Std	Std	Std
Ventilating fan	Std	Std	Std
STRUCTURE			
Frame of channel steel	Std	Std	Std
Axles with rear brakes	Std	Std	Std
2x4 structure	Std	Std	Std
Waterproof sheet	Std	Std	Std
Truss roof (resist snow accumulation)	Std	Std	Std
Heat insulating material for cold districts (wall, roof, floor)	Std	Std	Std
DIMENSION			
Body length (cm)	600	800	1000
Body width (cm)	240	240	240
Height (from the ground) (cm)	375	375	375

NOTES: Specification may change due to makers' specification changes or supply situations of parts or materials. Photos shown in this page may include optional equipment and specifications, or props that are for photography purposes only. Colors shown may vary due to reproduction and printing processes. Floor plan images may include optional furniture or home appliances depicted as arrangement examples.

 [HOME](#)

[MODELS](#)

[> House-type Models](#)

[> Shop-type Models](#)

[NEWS](#)

[Transport / Set Up](#)

[USEFD Mobile Homes](#)

[Manufacturing](#)

[Utilization at Disasters](#)

[Utilization Examples](#)

[About Us](#)

[Contact Us](#)

Cumberland Japan reserves the right to change or discontinue models, prices, materials, equipment, specifications, and availability at any time without notice.

Copyright (C) 2012 Cumberland Japan. All Rights Reserved.